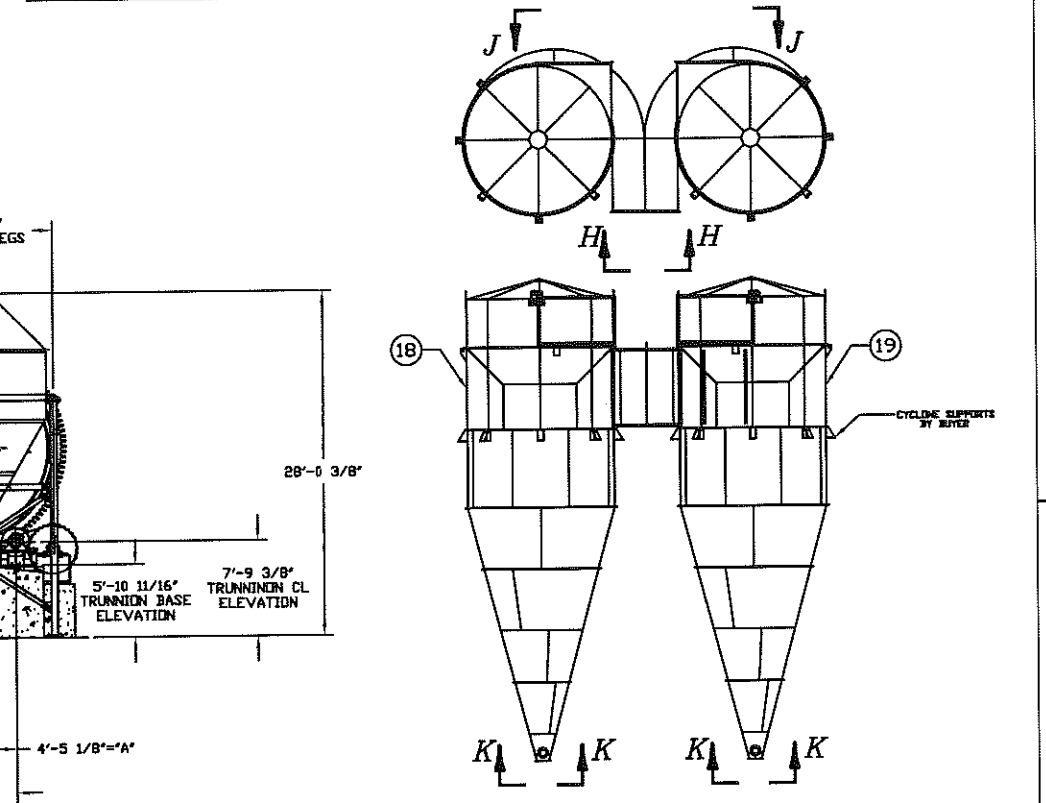
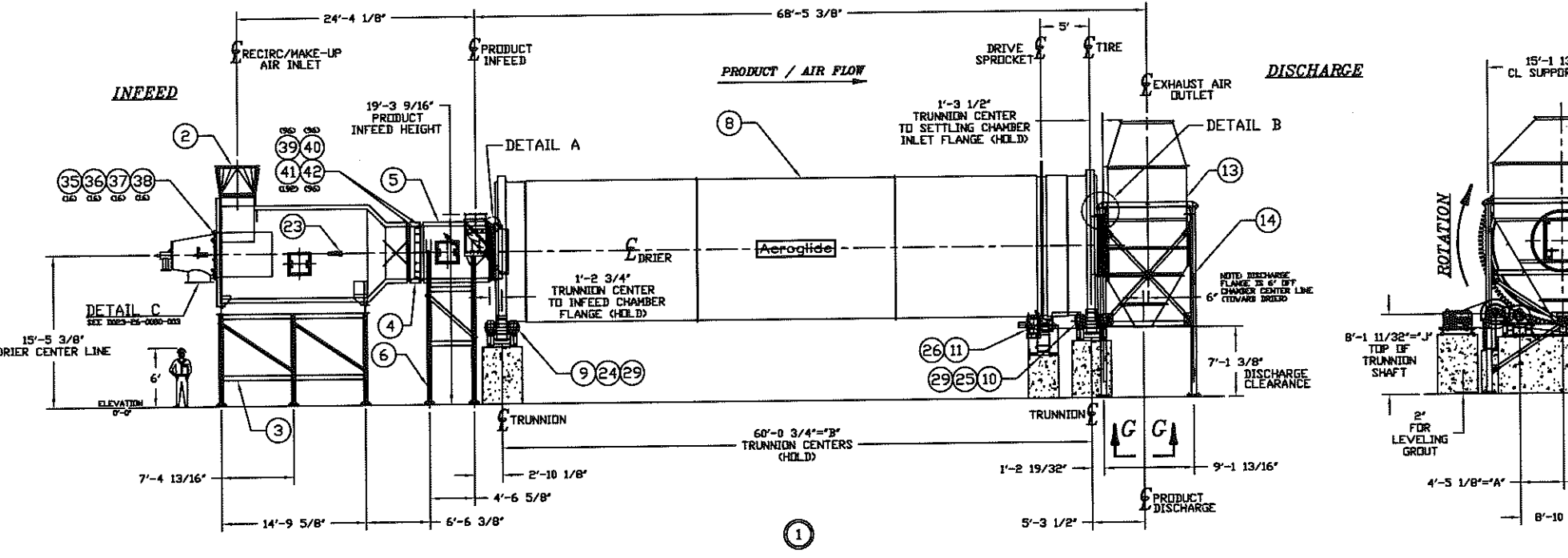
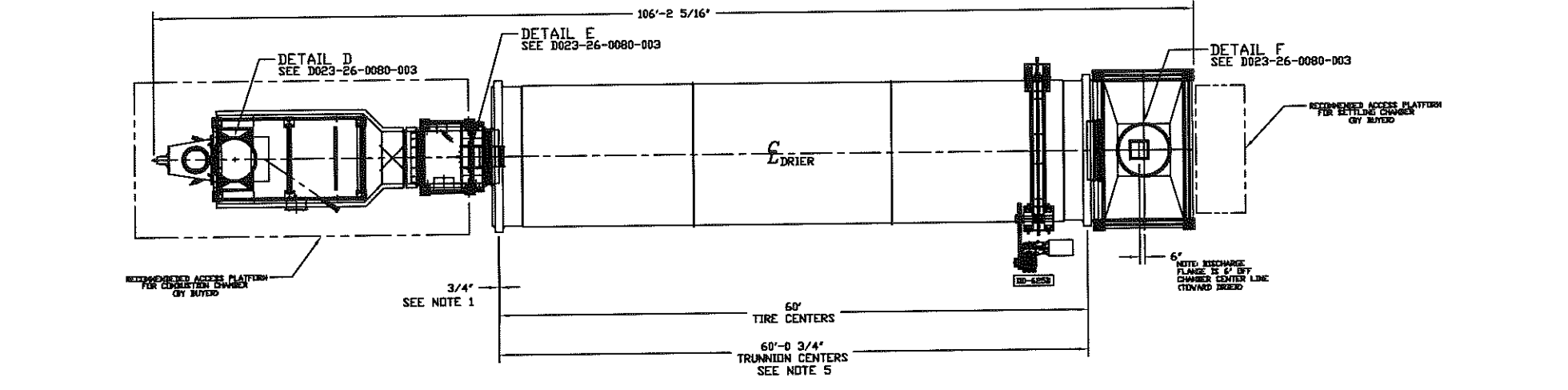


ITEM NO.	QTY	DESCRIPTION	MATERIAL SPEC OR PART NO.	W	L	MLR	DWG. ASSY OR ITEM NO.
		PARENT ASSEMBLY					D023-26-080-002
		INSTALLATION ASSEMBLY					D023-26-080-002-01
		COMBUSTION CHAMBER					01336408_3558 COMBUSTION
		COMBUSTION CHAMBER STAND					DSK07103-69
		EXPANSION JOINT					03336408_3559 INFEEED
		INFEEED CHAMBER					01336408_3559 INFEEED
		INFEEED CHAMBER STAND					DSK07103-70
		FEED END AIR SEAL INSTALLATION					DSK07103-71-01
		DRYER DRUM					01336408_3557 DRYER
		DRYER TRUNNION (FEED END)					02336408_3560 DTRUNNION
		DRYER TRUNNION (DISCHARGE END)					01336408_3560 DTRUNNION
		CRADLE DRIVE ASSEMBLY					01336408_3695 DRYER DRIVE
		DISCHARGE AIR SEAL INSTALLATION					DSK07103-72-01
		DRYER SETTLING CHAMBER					01336408_3581 SETTLING
		DRYER SETTLING CHAMBER STAND					DSK07103-68
		AIRLOCK SST 24" SQUARE FLANGE					D023-26-080-002/15
		AIRLOCK MILD STEEL 20" SQ. FLANGE					D023-26-080-002/16
		AIRLOCK MILD STEEL 12" ROUND FLANGE					D023-26-080-002/17
		CYCLONE 45,000 ACFM LEFT SIDE					D023-26-080-002/18
		CYCLONE 45,000 ACFM RIGHT SIDE					D023-26-080-002/19
		MARION 42" PADDLE MIXER MODEL CPS-42144					D023-26-080-002/20
		FAN-RBA 923 CL22 CW ARR8 UBD SWSI					D023-26-080-002/21
		FAN-BCS 660 CL22 CCW ARR8 TAU-50 DEG FROM HORZ SWSI					D023-26-080-002/22
		PORT-OBSERVATION-ROUND 4" QUARTZ GLASS					D023-26-080-002/23
		TRUNNION GUARDING ASSEMBLY (FEED END)					DSK07103-73
		TRUNNION GUARDING ASSEMBLY (DISCHARGE END)					DSK07103-74
		DRIVE GUARDING ASSEMBLY					DSK07103-75
		INSTRUMENTATION ASSEMBLY					DSK07103-45-01
		TRUNNION ALIGNMENT DESCRIPTION & TOLERANCES					D023-16-0118-003
		TRUNNION BEARING SHM PACK					BSK07103-76-01
		SECTIONS AND DETAILS					D023-26-080-003
		DOOR ASSEMBLY, SETTLING CHAMBER					CBF INSULATED DOOR 1
		CONTROL PANEL ASSEMBLY					DSK07103-36
		SERIAL NUMBER NAMEPLATE					BSK07103-77
		AIR VALVE (SUPPLIED WITH SMARTLINK CONTROL SYSTEM)					1062890
		BOLT-HX HD 1-8 X 3 GR2 ZN					D023-26-080-002/35
		NUT-HX 1-8 GR2 ZN					D023-26-080-002/36
		WASHER-FL USS 1 GR2 ZN					D023-26-080-002/37
		WASHER-LOCK SPLIT 1 GR2 ZN					D023-26-080-002/38
		BOLT-HX HD 5/8-11 X 2 GR2 ZN					D023-26-080-002/39
		NUT-HX 5/8-11 GR2 ZN					D023-26-080-002/40
		WASHER-FL USS 5/8 GR2 ZN					D023-26-080-002/41
		WASHER-LOCK SPLIT 1/2 GR2 ZN					D023-26-080-002/42
		BOLT-HX HD 1/2-13 X 1-3/4 GR2 ZN					D023-26-080-002/43
		NUT-HX 1/2-13 GR2 ZN					D023-26-080-002/44
		WASHER-FL USS 1/2 GR2 ZN					D023-26-080-002/45
		WASHER-LOCK SPLIT 1/2 GR2 ZN					D023-26-080-002/46
		BOLT-HX HD 3/8-16 X 2 18-8 SST					D023-26-080-002/47
		NUT-HX 3/8-16 18-8 SST					D023-26-080-002/48
		WASHER-3/8 18-8 SST(SAME AS 100-0480)					D023-26-080-002/49
		WASHER-LOCK 3/8 18-8 SST					D023-26-080-002/50
		BOLT-HX HD 3/8-16 X 1-1/2 GR2 ZN					D023-26-080-002/51
		NUT-HX 3/8-16 GR2 ZN					D023-26-080-002/52
		WASHER-FL USS 3/8 GR2 ZN					D023-26-080-002/53
		WASHER-LOCK SPLIT 3/8 GR2 ZN					D023-26-080-002/54



SEE DWG. D023-26-080-003 FOR SECTIONS & DETAILS

- SHO. NOTES:
- CONTROL PANEL AND GAS PIPING ARE NOT SHOWN.
 - AEROGlide RECOMMENDS INSTALLATION OF ACCESS PLATFORMS AROUND THE COMBUSTION AND SETTLING CHAMBERS (BY BUYER).
 - ALL DUCTWORK IS SUPPLIED BY BUYER.
 - DUCTWORK FROM COMBUSTION BLOWER TO BURNER MUST INCORPORATE THE AIR VALVE (ITEM 34).
 - TRUNNION CENTERS ARE 3/4" WIDER THAN TIRE CENTERS TO ALLOW FOR THERMAL EXPANSION OF DRYER.
 - REFER TO DWG D023-16-0118-003 REV A. FOR TRUNNION DIMENSIONS LABELED WITH A LETTER.

REV	DESCRIPTION	DATE	BY
C	ADDED INSTALLATION DIMENSIONS AND NOTE 6/11/08 CAG		
B	ADDED INSTALLATION DIMENSIONS FOR CLARIFICATION 6/11/08 CAG		
A	REV'D PER REVISION 1/18/08 - REVISED INFEEED SEAL & ADDED EQUIPMENT DIMENSIONS PER CUSTOMER REQUEST		

TOLERANCES UNLESS NOTED
FRACTION ± 1/16 DECIMAL ± 0.015

SURFACE FINISH NOTE
UNLESS OTHERWISE SPECIFIED, ROUGHNESS HEIGHT ON ALL MACHINED SURFACES SHALL NOT EXCEED
125 MICRO-INCHES

ALL DIMENSIONS ARE IN INCHES EXCEPT AS NOTED

COPYRIGHT © AEROGlide CORP. ALL RIGHTS RESERVED. CONTENTS OF THIS DRAWING ARE THE EXCLUSIVE PROPERTY OF AEROGlide CORP. AND MAY NOT BE USED FOR ANY PURPOSE OTHER THAN THAT WHICH SUBMITTED, NOR OBLIGED TO ANY THIRD PARTY WITHOUT ITS EXPRESS WRITTEN PERMISSION.

SCALE 1/8"=12"

Aeroglide Corporation
 TELEPHONE (919) 851-2000 P.O. BOX 28505
 FAX (919) 851-8029 RALEIGH, NORTH CAROLINA 27626
ROTARY DRYER
INSTALLATION ASSEMBLY
 (R3 168-60 RGX)

JOB NO. 07103.2
 REF NO. D023-16-080-052
 DWG NO. D023-26-080-002 C